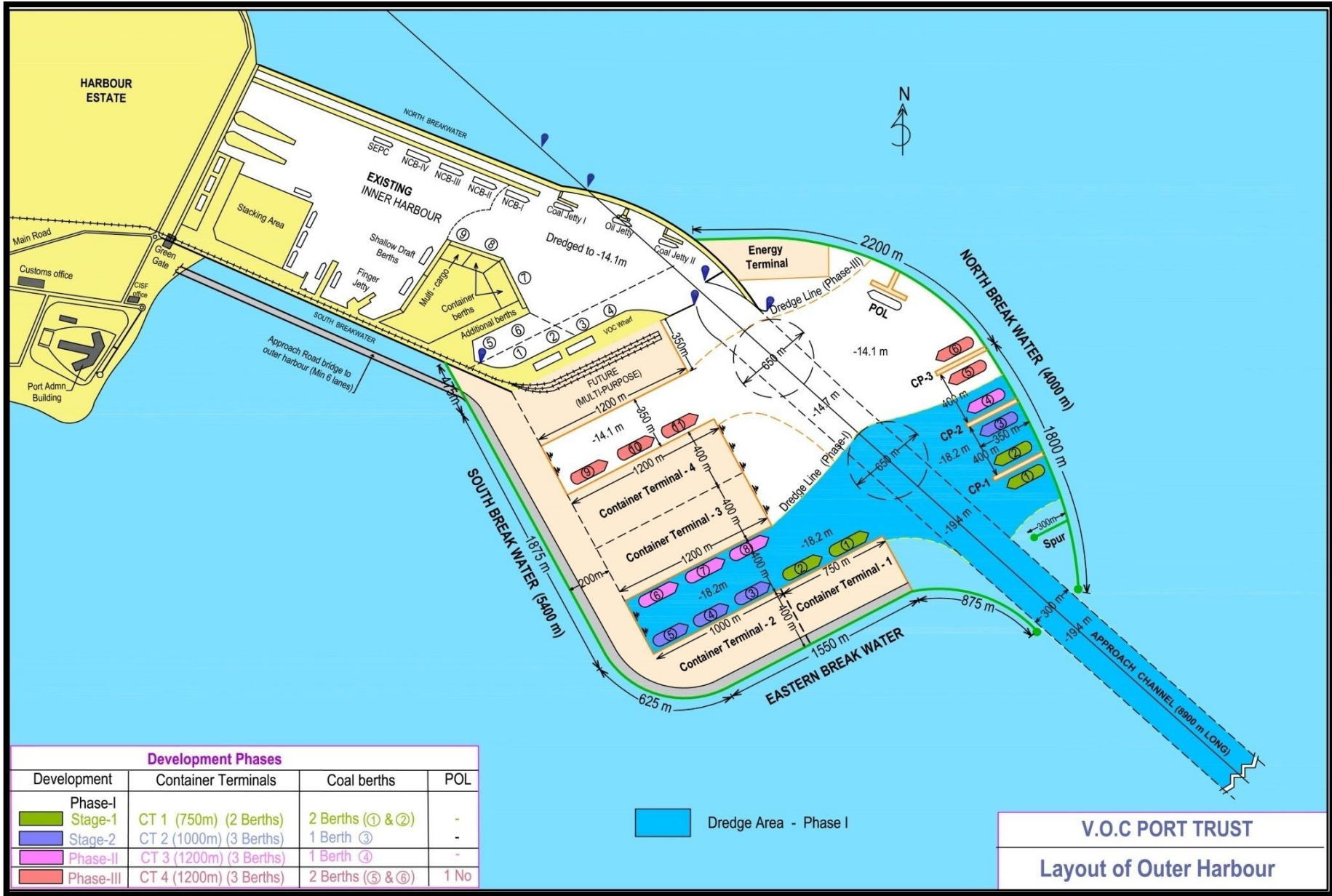


**Note on the proposed outer harbour project at V.O.Chidambaranar Port
(Tuticorin)
(Update as on 31.07.2015)**

1. V.O.Chidambaranar Port at Tuticorin located in the state of Tamil Nadu, India is marching forward as a preferred port of South India through its user-friendly and cost effective services. Tuticorin is emerging as a hub of Thermal power stations in south India basing their coal needs channelized through VOC Port. Because of its strategic location at the southern tip of Indian Sub-continent and closer to the great East-west international Shipping route, it has great potential to attract transshipment containers. The port has handled 32.41 Million Tonnes of cargo during the financial year 2014-15 of which the share of coal is 13.80 Million Tonnes (42.6%) and containers 11.03 Million Tonnes (5,59,727 TEUS) (34%). Since its declaration as a Major Port in 1974, the port capacity has grown significantly keeping in pace with the industrialization in and around Tuticorin and the increasing EXIM traffic. The Port is reaching its saturation level.
2. Keeping in view the current growth and traffic potential, the outer harbour development is planned with matching infra-structure needs in terms of deep draft, operational efficiency and capacity to attract major shipping lines and ultimately to be an international transshipment hub. The Detailed project Report (DPR) was prepared by i-maritime consultants, Mumbai and validated by the Experts of Indian Ports Association. The project parameters have been finalized as shown in the layout drawing. Layout of outer harbour envisages development of container terminals to a total quay length of 4150m (11 berths) and 6 coal berths of each 350m in length, in 3 phases stretching from the year 2015 to 2043. The Planned draft of outer harbour is 16m capable of handling ultra large container vessels up to 18,000 TEU Capacity, and cape size coal vessels (1,20,000 DWT). Total capacity of outer harbour on completion will be 187.5 MTPA.



Development Phases

Development	Container Terminals	Coal berths	POL
Phase-I			
Stage-1	CT 1 (750m) (2 Berths)	2 Berths (① & ②)	-
Stage-2	CT 2 (1000m) (3 Berths)	1 Berth ③	-
Phase-II	CT 3 (1200m) (3 Berths)	1 Berth ④	-
Phase-III	CT 4 (1200m) (3 Berths)	2 Berths (⑤ & ⑥)	1 No

Dredge Area - Phase I

V.O.C PORT TRUST
Layout of Outer Harbour

3. Traffic forecast for the proposed outer harbour

Cargo item		FY19	FY24	FY30	FY36	FY43
Coal (million tonnes)		0.40	15.30	35.00	55.10	66.80
POL / Liquids (million tonnes)		0.00	0.00	0.10	0.30	1.70
Containers (million TEUs)	Domestic	0.20	0.70	1.40	2.10	2.80
	Transshipment	0.50	1.19	2.17	3.54	7.42
	Total	0.70	1.89	3.57	5.64	10.22
----- (million tonnes)		10.50	28.35	53.55	84.60	153.30
Grand Total (million tonnes)		10.90	43.65	88.65	140.00	221.80

4. Development of outer harbour at VOC Port is a Central Sector Project; included in the Maritime Agenda (2010 – 2020); included in Twelfth Five Year plan (2012-17) earmarking a provision of Rs.1609 Crores. PIB memo has been submitted to the Government in March, 2015 seeking sanction for Phase-1 development. Hydrographic survey & Geotechnical investigations have been completed. The major marine works are expected to commence in early 2016. The schedule is to commission the first container berth of outer harbour before end of 2020.
5. The outer harbour will be developed in three phases at a total cost of Rs.20,870 Crores. The project will be implemented and managed under Land-lord model (public-private). The port will invest on creation of infrastructure (breakwaters, dredging, navigational aids & road/rail connectivity) and development of cargo terminals & operations will be by private sector (PPP model). Estimated cost of Phase-1 development is Rs.13,775 Crores of which port investment is Rs.9,010 Crores & private investment is Rs.4,765 Crores.
6. Phase-wise development of outer harbour and capacity creation is as shown in the statement.

Outer Harbour Project – Phase-wise development and capacity creation.

Phase	Duration	Terminals / Berths	Capacity addition (MTPA)		Project Cost (Port's Investment) (Rs. In crores)			Sub Total	Private Investment (Rs. In crores)	Total (Rs. In crores)
			Cargo-wise	Total	Breakwater	Dredging	Others			
Construction	2015-20	Construction of Breakwaters, Dredging etc (Ports investment)								
Phase - I	(Stage-1) 2020-25	Container (CT 1) Quay - 750m (2 berths)	1.50 MTEUS (22.50MTPA)	42.50	920	5,800	900	7,620	2,530	10,150
		Coal berths-2 350m x 30m each	20 MTPA							
	(Stage-2) 2025-30	Container (CT 2) Quay - 1000m (3 berths)	2.00 MTEUS (30 MTPA)	40.00	-	1,390	-	1,390	2,235	3,625
		Coal berth - 1 350m x 30m	10 MTPA							
Sub Total				82.50	920	7,190	900	9010	4,765	13,775
Phase - II	2031-36	Container (CT 3) Quay- 1200m (3berths)	2.40 MTEUS (36 MTPA)	46.00					2,550	2,550
		Coal berth - 1 350m x 30m	10 MTPA							
Phase - III	2037-43	Container (CT 4) Quay- 1200m (3berths)	2.40 MTEUS (36 MTPA)	59.00		1,155		1155	3,390	4,545
		Coal berths -2 350m x 30m each	20 MTPA							
		POL berth - 1 300m x 24m	3 MTPA							
Total	2020-43	Containers (4150m) 11 berths Coal (2100m) 6 berths POL (300m) 1 berth		187.50	920	8,345	900	10165	10,705	20,870
Note: The harbour layout has a space of 1200m for multi-purpose berths (Capacity 30 MTPA)										Total - 217.50 MTPA